

Mar/Apr 06

GALLERY

'A Year in France'
Frank & Sharon Romero.
Exhibition **EXTENDED**
Through March 12.



Frank & friends

'Take 5', featuring;
Lana Blades, Lynne Fearman,
Giuliana Giuliano,
Patricia Gebhart Hanft,
& Saralyn Lowenstein.



Painting by Lynne Fearman
March 13 to April 1
Reception Sat 18, 4-6pm

'REUNION', featuring:
Diana Boate, Linda French,
Kate Moriarty, Toni Scott &
Robert Stevens. April 3- 30,
Reception Sat 8, 5-8pm.



Painting by Kate Moriarty

March is a significant month in regards to the brief history of FAF. It was March 30, 2003, that FAF celebrated its Grand Opening by honoring Vincent Van Gogh's 150th birthday. Many artists who attended and participated in that celebration have continued to support FAF, helping make it what it set out to be, a unique venue offering: affordable artist's **workspace**; a professional **gallery**, in many cases allowing artists to display their work for the first time; and a great facility to host **workshops**. In addition to offering non-instructed figure sessions 4 times a week, the introduction of art **classes** has been an additional benefit FAF offers local artists. As you can see from the various activities highlighted in this issue, FAF continues striving to meet the needs of the artist community. ■



Minutes before the Grand Opening

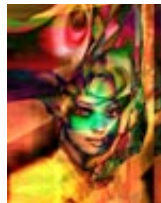
Gallery ■ FAF is pleased to announce that Frank & Sharon Romero's exhibition, **'A Year in France'**, was not long enough. It has been extended to Sunday, March 12. ■ The final two weeks of March presents **'Take 5'** featuring 5 local artists: Lana Blades, Lynne Fearman, Giuliana Giuliano, Patricia Gebhart Hanft & Saralyn Lowenstein. The exhibit will display watercolor, acrylic, oil and photography. The exhibition is March 13 to April 1. The artists reception is Saturday 25, 4 to 7pm. ■ April 3 to 30, Margaret Danielak, owner of DanielakArt - A Gallery Without Walls is producing a group show, **'REUNION'**, featuring her group of artists - the late illustrator/urban landscape painter Robert G. Stevens (*Margaret's father*), award-winning sculptor/painter/digital artist Toni Scott, Los Angeles-based pastel artist Kate Moriarty, local abstract painter Linda French, and San Francisco-based botanical illustrator and photographer Dianne Boate. Join the artists for their reception Saturday 8, 5-8pm. ■ For gallery availability & schedule, visit www.fineartistsfactory.com.



Sharon & friend



Painting by Patricia Hanft



by Toni Scott



Workshops ■ **Frank Webb** makes his first visit to FAF, March 15 to 17. Frank studied privately with Raymond Simboli and Edgar A. Whitney and has influenced many artists himself with his clean fresh painting

technique which looks deceptively simply. For those not able to attend the FAF workshop, Frank will be *Mid-Valley Arts League* guest demo artist of the month, Wednesday 15, 7:30pm to 9:30pm at the Temple City Community Center. ■

Ted Nuttall returns for his 4th FAF workshop April 20 to 22. Ted's popularity is demonstrated by his workshop being sold



out months in advance. In addition to watching him get some *good licks* in during his demos, students are occasionally treated when he takes out his guitar and plays some mellow tunes. FAF

recommends that you call today to be placed on the list of 'first to be notified' for his next FAF workshop. ■ **NOW** is the time to reserve your space for the remaining **2006**

Workshops: May 18-20, Robert Burridge / June 23-25, Joseph Stoddard / July 24-29, Craig Srebnik / Aug 11-13, Brenda Swenson / October 23-25, Tom Lynch / Nov 13-15, Frank Francese. ■ The first workshops of the year sold out to the disappointment of artists attempting to register at the last minute. Don't miss that workshop you've been meaning to attend, register now.



Robert Burridge demo



by Joseph Stoddard

■ FAF would like to **reward** artists that call in March to register for 2 or more of the remaining 2006 FAF workshops. These early bird artists can choose to receive an FAF Apron or FAF Hat, for **FREE!** ■ Download workshop registration forms by visiting: www.fineartistsfactory.com.

- Continued

WET PAINT UPDATE

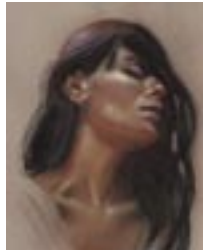
CLASSES

Oil Painting

– **John Paul Thornton**
Oil Painting, 10 Sessions
March 20 to May 22,
Mondays, 1 to 4pm

Head Drawing in Pastel

– **Ernie Marjoram**
10 Sessions, March 29
to May 31, Wednesdays,
1:30 to 4:30pm



by Ernie Marjoram

Dynamic Costumed Figure Drawing

– **Justine Limpus Parish**
4 Saturday Sessions
March 25, April 1, 8, 15
1pm to 4pm

FIGURE SESSIONS

Tues & Thurs 7-10pm
Wed & Sat 9:30am-12:30pm

NO Figure Sessions:

March – Wed 15, Thurs 16
April – Tues 11, Thurs 20,
& Sat 22

WORKSHOPS

Register Now for May &
June **2006 Workshops!**
Robert Burridge,
May 18-20 / Joseph
Stoddard, June 23-25

FAF WEB SITE

**NEW! Associate Member
web pages now available!**

Classes ■ John Paul Thornton and Ernie Marjoram continue their 10 week classes in 2006. And Justine Limpus Parish will be changing her one day Gesture workshop to a 4 Saturday in a row, **Dynamic Costumed Figure Drawing** class.

Oil Painting – John Paul Thornton

■ John Paul's current students are looking forward to continuing his series of oil painting classes starting up again March 20 through May 22. All levels are welcome! (10 sessions) Mondays 1pm-4pm. \$275 (Associate Members \$250).



by John Paul Thornton

Head Drawing in Pastel – Ernie Marjoram ■ Students got a head start and are registering early for Ernie's next class.



Students will be drawing from photo reference and live models. Classes begin March 29 and go through May 31. All levels are welcome! (10 sessions) Wednesdays 1:30-4:30pm. \$360 (Associate Members \$320). *Model fees included.*

Dynamic Costumed Figure Drawing – Justine Limpus Parish

■ For artists interested in character, fashion, costume and dynamic quick figure drawing. There will be live costumed models, with a different theme and music every week. The class will focus on the basic concepts of proportion, form and shape. Excellent for beginners wanting figure drawing basics and for advanced students wishing to explore new concepts. *Lights, music, models, costumes, action, fun!*



FAF Associate Members ■ As an FAF Associate Member you can have your own individual web page that is linked from the FAF Associate Member list. For a one time investment of \$125 (no annual fees) you can post your photo, your bio, and up to 4 samples of your artwork. Check out the FAF Associate Member list to see examples of what your fellow FAF associates are doing. ■ Associate Member, Brenda



Welsh, had a successful solo exhibition, 'Crosscurrents', at the FAF Gallery the first two weeks of January. In addition to the great turnout, Brenda sold over a dozen paintings.

■ The last two weeks of January Associate Member, Saralyn Lowenstein coordinated a group exhibition, 'Big Sur with Love'. Over 20 artists painted on location in the Morro Bay, Big Sur and Asilomar areas. Among the accomplished artists was Milford Zornes, who celebrated his 98th birthday this year. ■ The first two weeks of February, 8 Associate Members (Karen Batten, Benla Bennett, Marsha Grieco, Dolly Reid, Joann Romberger &



Henry Fukuhara, Milford Zornes & Richard Gutschow

Andrea Williams) pooled their resources and exhibited their work in 'Eight of Arts'.



FAF Pachyderms ■ Designed specifically for FAF, Pachyderm workstations are now available to the public. These versatile units are great for fine artists



as well as hobbyist of all kinds. Pachyderms come in two sizes, Large - 6' wide, \$2,275, Small - 4'3" wide, \$1,950. Let us

know that you are an FAF Associate Member and receive a 10% discount and free local delivery!

FAF Accessories ■ There is still a limited supply of FAF hats and aprons. They are adorned with an embroidered FAF logo. Hats are \$20, and the aprons are \$25.



A 20 minute oil painting by Steve Ramio during a Thursday evening FAF figure session

FAF Member ■ Linda (Lin) Miller joined FAF in November, 2004. Lin has always loved art, and planned to enjoy painting in her retirement



by Lin Miller

years after a fulfilling career in electrical engineering. However, a bout with breast cancer in 2002 encouraged her to accelerate her plans, and she is now happily pursuing a full-time career in art. Lin works primarily in oils, but relaxes with charcoal. Currently, she is working on portraits and figurative works for a November 14, 2006 FAF show with fellow members Judy Davis and Heidi Floren. Check the FAF website for details.